

Neckinger Estate, London, SE16 3QF

A unique and full of character two double bedroom apartment in ever-so-popular Bermondsey.

The property boasts a naturally bright living room leading to a private balcony, a well kept kitchen with plenty of storage space, two double bedrooms, and a family bathroom. Additional storage space can be found in the hallway.

Located moments from the greenery of Spa Gardens, a short stroll from a plethora of local independent boutiques, artisan shops, bakeries, breweries and cafes, as well as within easy reach of trendy Bermondsey Street, the property is ideal for those looking for a private place to retreat without sacrificing location and easy access to some of the best aspects of city life.

Guide Price: £375,000 to £400,000.

- Two Double Bedroom Apartment
- Private Balcony
- Low Service Charge
- Plenty of Storage Space
- Moments from Iconic Arches, Independent breweries, Cafes, Boutique Shops and Restaurants
- A Short Stroll From Underground Station

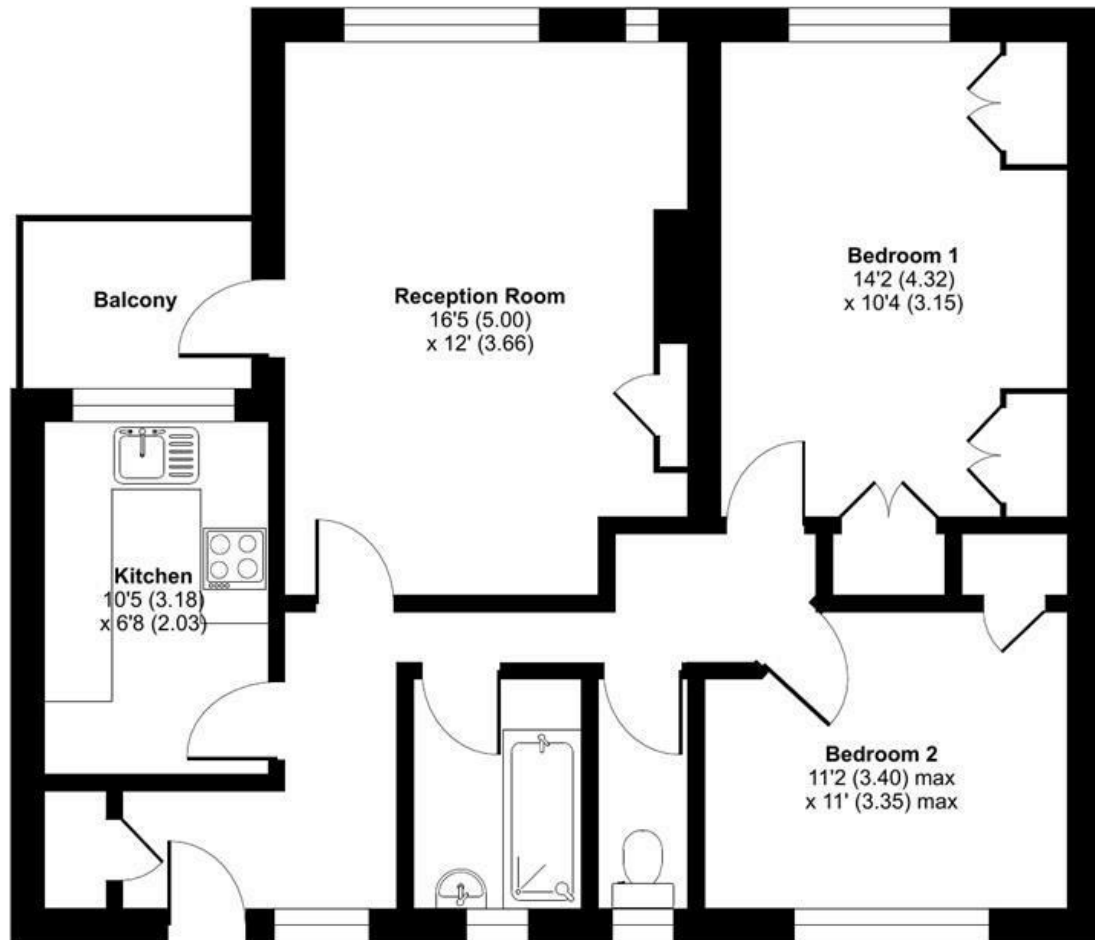
Alex & Matteo
ESTATE AGENTS

Guide price £375,000

Neckinger Estate, London, SE16

Approximate Area = 706 sq ft / 65.6 sq m

For identification only - Not to scale



SECOND FLOOR

Alex & Matteo
ESTATE AGENTS



**Certified
Property
Measurer**

Floor plan produced in accordance with RICS Property Measurement Standards incorporating International Property Measurement Standards (IPMS2 Residential). © nitchcom 2024. Produced for Alex & Matteo Estate Agents. REF: 1089047

Energy Efficiency Rating		
	Current	Potential
Very energy efficient - lower running costs		
(92 plus) A		
(81-91) B		
(69-80) C		
(55-68) D		
(39-54) E		
(21-38) F		
(1-20) G		
Not energy efficient - higher running costs		
	70	79
England & Wales		
	EU Directive 2002/91/EC	